



STAGE 1 NOW LEASING



THE ASTRA ADVANTAGE

Astra Aerolab is a globally significant aerospace precinct, co-located with RAAF Base Williamtown and Newcastle Airport. Nestled within the beautiful Port Stephens dune landscape in the Hunter region, it's a place taking people and businesses higher.

A unique eco-system where diverse talents, knowledge and innovation work together to deliver excellence; it's a space designed to connect with nature, community and the world.

It offers a one-off place designed to nurture your business and its people, with health and wellbeing central to its design; complemented with outstanding lifestyle.

Work in this exceptional coastal location, in a precinct where building design embraces people, environment and the land.

Stage 1 leasing opportunities are now available for premium industrial space. Design has commenced, with construction underway in early 2023.

LEASE YOUR SPACE

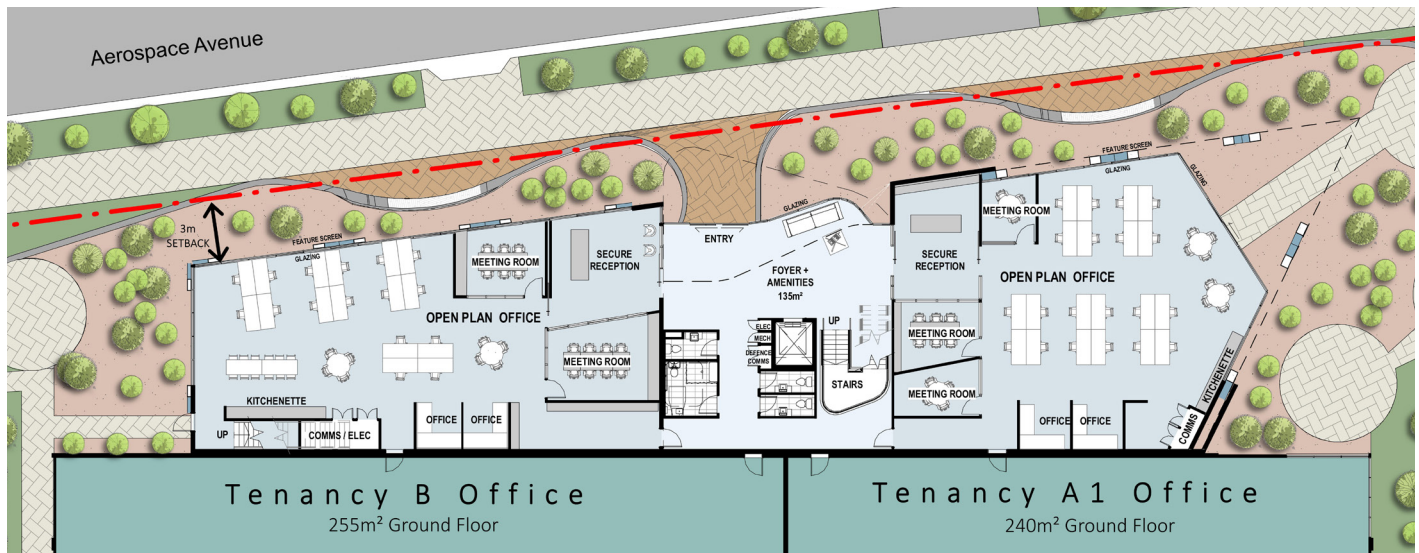
Situated in a unique natural environment and designed to increase workforce engagement and productivity, Astra Aerolab offer modern premium building amenities for a large range of industrial applications.

You can benefit from our highly customisable property solutions, including flexible commercial models and adaptable lease terms.

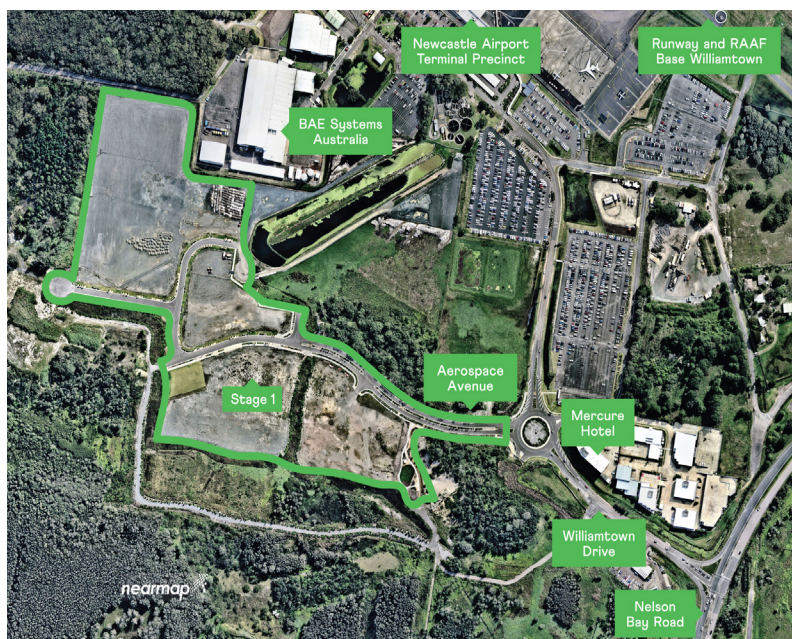
Let our team provide you with an integrated service offering, including asset and facilities management; with a variety of fit out options available to suit your business requirements.



INDUSTRIAL OPPORTUNITIES



- Configurable warehouse 2000m²
NLA divisible for tenants
- 2 level office space up to 985m²
divisible for tenants
- Institutional A Grade industrial space
- On site visitor parking
- Ample parking for staff and visitors
- Rear access for heavy vehicles
- End of trip facilities within precinct
- Retail facilities available within precinct



OUTSTANDING LOCATION

Astra Aerolab is based in the Hunter region, centrally located between scenic Newcastle and Port Stephens. It sits adjacent to Newcastle Airport and RAAF Base Williamtown and is just a two-hour drive north of Sydney.

Astra Aerolab is located adjacent to Newcastle Airport and RAAF Base Williamtown. As Australia's sixth largest city and biggest regional economy, Newcastle is centrally located and just a short two-hour drive north of Sydney.

Astra Aerolab is connected to crucial road, rail, seaport and air networks. This includes direct access to the M1 Motorway, Pacific and New England Highways, providing a gateway to Northern New South Wales and the metropolitan hubs of Sydney, Brisbane and Melbourne.

CONTACT

Marcus Polites
Business Development and Leasing Manager
+61 478 677 263
mpolites@newcastleairport.com.au

Robert Green
Property Development Manager
+61 418 453 871
rgreen@newcastleairport.com.au

Disclaimer:

Astra Aerolab is the registered business name of Greater Newcastle Aerotropolis Pty Ltd ACN 629 359 726 ("GNAPL"). The opinions and information herein or otherwise in relation hereto are made by GNAPL in its best judgement, in good faith and as far as possible based on data or sources that are believed to be reliable. The material contained herein is not intended to substitute professional advice. The user accepts sole responsibility and risk associated with the use of the material contained herein, irrespective of the purpose to which such use or results are applied. COPYRIGHT GNAPL. All rights reserved. No part of this work may be reproduced or copied in any form or by any means without the written permission of GNAPL.